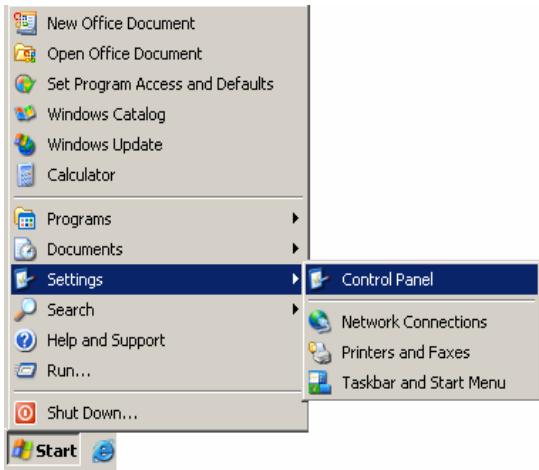


QUICK START GUIDE

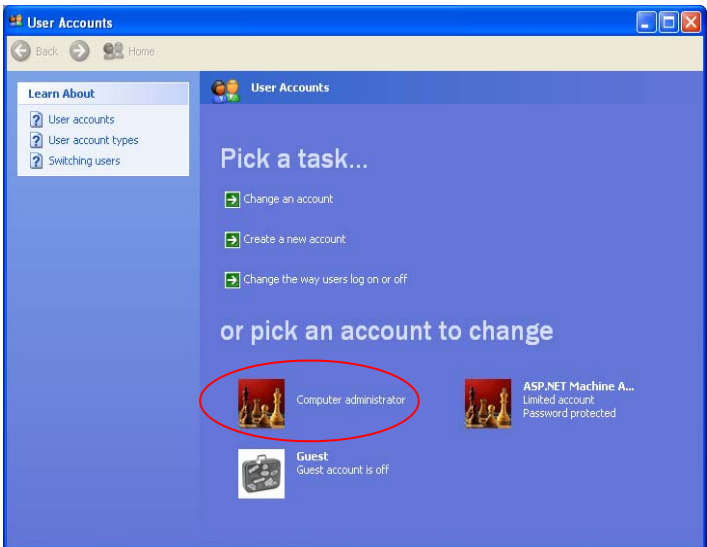
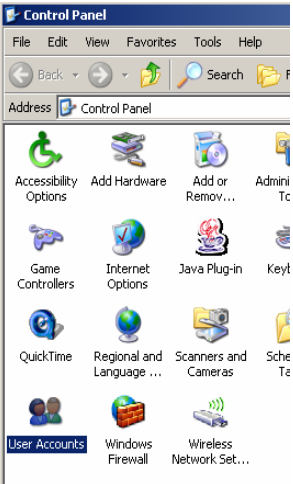
Welcome to Your 00DJ. To start using follow these quick start instructions. These will give you a quick insight into the product, and into the basics of its use.

- Plug your 00DJ into the mains with the right angled cable provided. The LED's behind the screen and the main fan will light, and the Fingerprint scanner will flash on briefly.
- Press the on switch, located in the upper left corner of the unit. The Lights above the keyboard will flash on, and the keyboard illumination will light.
- Wait for the system to load into the Operating system.
- You can now transfer your music into the system via means of....
 - The USB2 Link cable. (If purchased)
 - An external CD/DVD Drive, with transferring of the Songs by Data Disks.
 - External Hard Disk.
 - USB Pen Drive
- Once your music is transferred, Load the provided DJ program or Windows media player and you are ready to rock.
- Within PCDJ products, the sound outputs are set up upon installation and are set to player 1 to be channel 1 (bottom set of two on the phono row) and player 2 been channel 2 (next set up.).

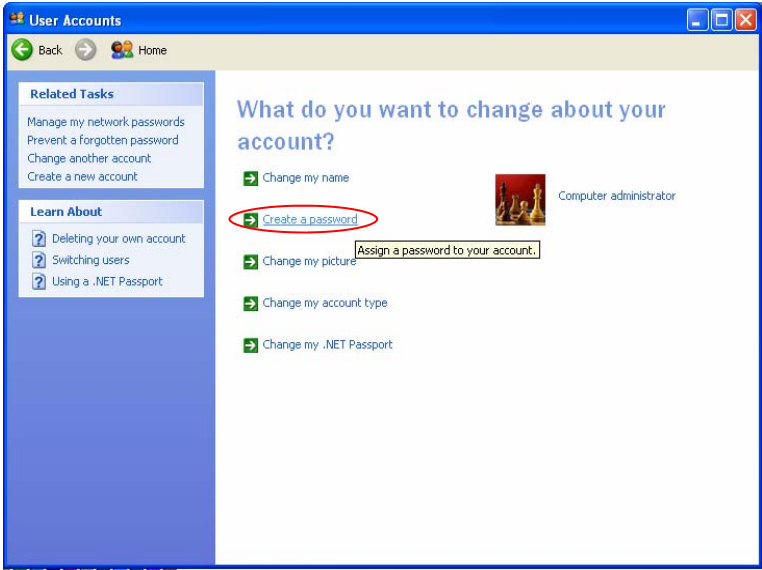
● For Security you need to activate the fingerprint scanner., follow these steps;



- First set a password for your main windows account.
- Click on the start menu, Settings, Control Panel.
- Click the "User Accounts" icon.



● Now select your main user account.



- Then select “Create a password”. Type your desired password in and apply.

- Place your finger on the Scanner for about a second, make sure you apply firm pressure to make a good contact. Then follow the onscreen

wizard.

- (To lock down the 00DJ while you are away from it, touch the finger scanner icon in the system tray, a menu will appear, then select Lock Session.)

You are now ready to fully enjoy your experience with the 00DJ.

System Map..

This sections shows what each of the outputs are, and where they are placed.

